



## Certificate of analysis

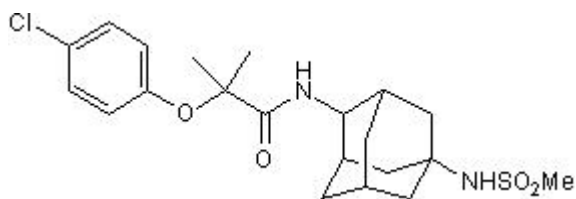
# Methenolone Enanthate

URL for this product: [http://www.aasraw.com/product/Methenolone Enanthate/](http://www.aasraw.com/product/Methenolone%20Enanthate/)

Compound name	Methenolone Enanthate
Batch number	AAS1708-22-8
Batch molecular formula	C <sub>21</sub> H <sub>29</sub> ClN <sub>2</sub> O <sub>4</sub> S·¼H <sub>2</sub> O
Batch molecular weight	445.48
Cas	303-42-4

### 1. PHYSICAL AND CHEMICAL PROPERTIES

Batch Molecular Formula:	C <sub>21</sub> H <sub>29</sub> ClN <sub>2</sub> O <sub>4</sub> S·¼H <sub>2</sub> O
Batch Molecular Weight:	445.48
Physical Appearance:	White solid
Solubility:	DMSO to 25 mM
Storage:	Store at +4°C
Batch Molecular Structure:	



### 2. ANALYTICAL DATA

TLC:	R <sub>f</sub> = 0.6 (Chloroform:Methanol [2.5%])
HPLC:	Shows 99.3% purity
<sup>1</sup> H NMR:	consistent with structure
Mass Spectrum:	consistent with structure

Microanalysis:	Carbon	Hydrogen	Nitrogen
Theoretical	56.62	6.62	6.29
Found	56.44	6.46	6.22

All products are

**"For research use only and are not intended for diagnostic or therapeutic use, not for use in humans"**

<http://www.aasraw.com>